

# PowerTerm® InterConnect (LINUX EDITION) Enterprise-class terminal emulation for Linux

THE COMPLETE HOST ACCESS SOLUTION FOR LINUX PLATFORMS



- WebConnect
- Host Publisher
- Pro Series
- InterConnect
- Plus/Lite
- Thin Clients
- Handheld

PowerTerm® InterConnect (Linux edition) is Ericom® Software's host connectivity solution for organizations requiring fast and accurate access to data residing on the broadest and widest range of hosts on the market today including: IBM Mainframe, IBM AS/400, Unix, Linux, OpenVMS, Tandem and HP-3000. PowerTerm InterConnect is the complete connectivity solution for organizations seeking to access mission critical applications from Linux and Unix workstations.

PowerTerm InterConnect is based on Ericom Software's proven technology, with over 5 million installations worldwide.

## SEAMLESS CONNECTIVITY

The PowerTerm InterConnect terminal emulator maximizes enterprise-wide productivity by enabling reliable access to accounting, inventory management, transaction processing and other mission-critical legacy applications. PowerTerm InterConnect provides seamless connectivity to the widest range of machine types and information systems.

PowerTerm InterConnect supports a full line of IBM (3270 and 5250 both display and printer), Digital, ANSI, Data General, Wyse, Televideo, Siemens, Tandem, HP, and other terminal emulation types. Its powerful and user-friendly interface provides a

simple, fast and effective means of running legacy applications from within Linux and Unix platforms. PowerTerm InterConnect facilitates connection to applications over network, modem or direct serial links from any workstation.

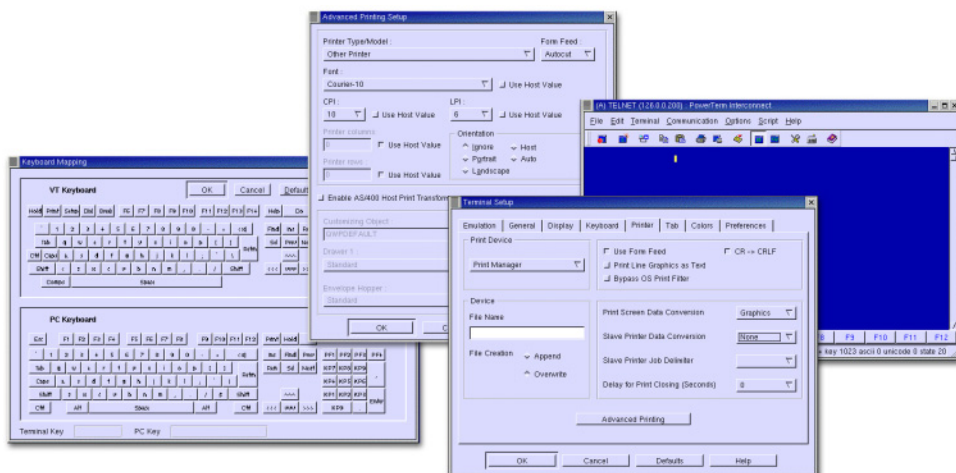
## MAXIMIZE EFFICIENCY AND PRODUCTIVITY

PowerTerm InterConnect boasts a robust set of features and fast key response times. Features include customizable function keys, multiple concurrent sessions, menu bar, scalable and selectable fonts, intelligent copy & paste, scripting, advanced printing, and more. This full-feature client ensures fast, reliable connections for sharing information throughout the enterprise, regardless of host type.

## SIMPLE TO INSTALL AND USE

This full Linux and Unix terminal emulator is installed onto any workstation in just a few minutes. Once installed, users can connect for immediate usage. Its intuitive nature makes it the easiest to use emulator today, helping to minimize training and maintenance.

*PowerTerm InterConnect supports multiple platform types, including MAC OS® X and Windows®.*



## POWERTERM INTERCONNECT (LINUX EDITION) TECHNICAL SPECIFICATIONS

<b>PLATFORMS SUPPORTED</b>	All Linux distributions, including Red Hat, Fedora, SuSE, Mandrake, Debian, and other major Unix platforms
<b>HOSTS SUPPORTED</b>	IBM Mainframe, IBM AS/400, UNIX, Linux, OpenVMS, Data General, SCO, Tandem, HP-3000
<b>TERMINALS EMULATED</b>	<b>IBM:</b> 3270 (TN3270E), 5250 (TN5250), 3151 <b>Digital:</b> VT52, VT100, VT220, VT320, VT420, VT520, VT525 <b>ANSI:</b> BBS-ANSI, SCO-ANSI, AT386, Linux, AIX Term <b>Wyse/TVI:</b> Wyse 50/50+/60/370, Televideo TVI 910+/920/925/950/955, <b>Others:</b> Data General D-412, ADDS VP A2, HZ 1500, Siemens 97801, HP 700/96, Tandem 6530
<b>SUPPORTED INTERFACES</b>	Ethernet, Serial Ports
<b>COMMUNICATION MODES</b>	TN3270/TN3270E (RFC 1646 and 1647), TN5250/TN5250E (with device name support), Telnet, Serial, Modem
<b>FILE TRANSFER</b>	IND\$FILE, Kermit (including get command), X-Modem, Y-Modem, Z-Modem, transfer to/from clipboard, host initiated file transfer, remote file browsing, ASCII
<b>PRINTING SUPPORT</b>	Auto print mode, print screen, slave printing, IBM 3287 printer, IBM 3812 printer, SNA LU1 and LU3 support, advanced printing (i.e., LPI & CPI), host print transform, override host settings, CICS printing
<b>SCREEN SUPPORT</b>	Graphical drag & drop keyboard mapping, graphical color selection, customizable function keys, scalable fonts, status line, menu bar and toolbar, 80/132 column width, variable lines per page, double width/height characters, blink, underline, reverse and more
<b>LANGUAGE SUPPORT</b>	English, German, French, Spanish, Italian, Turkish, Greek, Dutch, Polish, Hungarian, Swedish, Czech, Danish, Norwegian, Finnish, Portuguese, Russian, and all other European languages
<b>USER INTERFACE SUPPORT</b>	English, German, French, Spanish and Italian
<b>SECURITY FEATURES</b>	SSL, SSH, Kerberos
<b>OTHER FEATURES</b>	122 IBM keyboard support, keep-alive-timeout, multiple sessions, PowerTerm Script Language, save-lock-state, language code pages support, macros, script recorder, history scrollbar for session review, intelligent copy & paste of blocks/lines/words/tables, programmable hotspots, status display for host and printer and much more

### ABOUT ERICOM

Ericom Software is a leading provider of Enterprise-Wide Application Access Solutions. Since 1993, Ericom has been helping users access enterprise mission-critical applications. More than a decade later, Ericom continues to focus on its core business, while enabling access to applications running on a broad range of Microsoft® Windows® Terminal Servers, legacy and other systems; and helping organizations realize the benefits of their IT investments. With over 5 million installations in 45 countries, Ericom has offices in the United States and EMEA, and a worldwide network of distributors, strategic and OEM partners, including IBM, Microsoft, HP, Fujitsu Siemens, Wyse, Dell, Sun, Mercury and others.

Ericom and PowerTerm are registered trademarks of Ericom Software in the United States and/or other countries. All other brands and product names mentioned are trademarks of their respective owners.



**North America**  
Ericom Software Inc.  
231 Herbert Avenue,  
Building #4  
Closter, NJ 07624, USA  
Tel +1 (201) 767 2210  
Fax +1 (201) 767 2205  
Email: info@ericom.com

**UK & Western Europe**  
Ericom Software (UK) Ltd.  
11a Victoria Square  
Droitwich, Worcestershire  
WR9 8DE, United Kingdom  
Tel +44 (0) 870 2000 176  
Fax +44 (0) 870 2000 179  
Email: info@ericom.co.uk

**International**  
Ericom Software Ltd.  
8 Hamarpeh Street  
Har Hotzvim Technology Park  
Jerusalem 91450 Israel  
Tel +972 (2) 591 1700  
Fax +972 (2) 571 4737  
Email: info@ericom.com